



Balcones Forge Dispatch

President's Corner

September 2015



Greetings!

Fall is in the air! It's not here yet, but getting close enough to try and remember where you stashed all your long sleeve shirts and long pants. Fall is for forging!

This month's meeting will be an open forge demonstration mostly for the public at the Bulverde Jubilee in downtown Bulverde. John Meyer is our host has us a nice place to forge just outside his wife's craft shop, which is in itself a very interesting place to tour. This is a busy event with lot of food and things to see. Trade item is a "bending fork". Bring your show-n-tell items.

<http://web.bulverdespringbranchchamber.com/events/details/bulverde-jubilee-3821>

We are looking for one or two more forges and anvils in Bulverde. Please let me know if you can bring one.

William Bastas will host the October meeting on the 24th at a vintage blacksmith shop (owned by the late Donald Morgan) in Austin where much of the shop will be auctioned off. More details to follow, but this is advanced notice to start saving up a few bucks for this event.

November will take us to Blanco Buggy Barn Museum for their fall fair hosted by Dennis Moore. Dennis has several restored vintage wagons, buggies and coaches on display and he has a great lineup of Western swing bands playing throughout the weekend. They are looking for a few smiths to demo for the school kids on Friday. Please let me know if you are interested.

President's message continued on page 2.

Meeting Date is September 19



Officers

President

Jerry Achterberg
treefarm@swbell.net
210/661-3293

Vice-President

Jerry Whitley
jerry.whitley@ymail.com
210/288-3961

Treasurer

Rudy Billings
Rudy@BalconesForge.org
512/461-7375

Secretary

Tim Tellander
ttellander@gtvc.com
830/980-2903



Editor

Vince Herod
spotteddogforge@yahoo.com
512/253-6045

President's message continued.

December will take us back to Jerry Whitley's shop in Devine. Jerry and Marsha have been putting on this event for a few years now. You won't want to miss it! The competition trade item is a "branding iron". Make it small for your steaks, make your touchmark, make that Christmas gift for that special friend or recreate a historic brand from early Texas. Your choice. Prizes for the best.

See ya'll in Bulverde.

Jerry Achterberg
President Balcones Forge

BALCONES FORGE FUTURE

September 19th - The Bulverde Jamboree

October 24th- special meeting and auction
at the shop of Donald Morgan

November - Denis Moore, Blanco, TX

December - Whitley's, Devine, TX

THE BALCONES FORGE BOARD OF DIRECTORS

Jerry Achterberg, President
Jerry Whitley, Vice President
Rudy Billings, Treasurer
Tim Tellander, Secretary

John Crouchet
Daniel Harrington, Librarian & Co-Treasurer
Jim Elliot
Vince Herod, Editor
Alan Lee
Jeff Lee

BLUEBONNET IN-KIND AUCTION

Remember the myriad of items we had back in March at the Bluebonnet Demo? There were hundreds -- literally! Hope you won what you had your eye on, and thanks again for your fantastic participation!

Did you offer an in-kind item, such as a training class? Did you win such an item? If you have not fulfilled your offer, or if you have not been contacted, please let me know. Unfortunately, my fault! I did not follow through on letting everyone involved know.

Thanks again.

Rudy Billings (outgoing Treasurer)
rudy@balconesforge.org

KEEP IN TOUCH

Do you have a new email address?

Have you moved lately?

Has your phone number changed?

If so, please let one of your Treasurers know.

o2bDaniel@balconesforge.org

or

rudy@balconesforge.org.

The Balcones Forge Newsletter is written by the editor except as noted. Balcones Forge, its officers, members, contributors, editors and writers specifically disclaim any responsibility, or liability for any damage, or injury as a result of the use of any information published in the newsletter or demonstrated at a meeting or conference. Every effort is made to insure the accuracy and safety of information provided but the use by our members and readers of any information published herein or provided at meetings is solely at the user's own risk.

SEPTEMBER MEETING INFO

Below are directions to the Jubilee. I have also attached pictures (next two pages) on where to drop off and where to park. Everyone needs to have all their stuff dropped off by 9am or they will have to carry it from the road. I will have a Green Tent set up in our area.

29630 U.S. 281 Bulverde, TX 78163

Head north on US-281 N toward Ancestral Trail

Take the exit toward FM 1863/Bulverde

Turn left onto FM1863 W/Bulverde Rd

Continue to follow Bulverde Rd

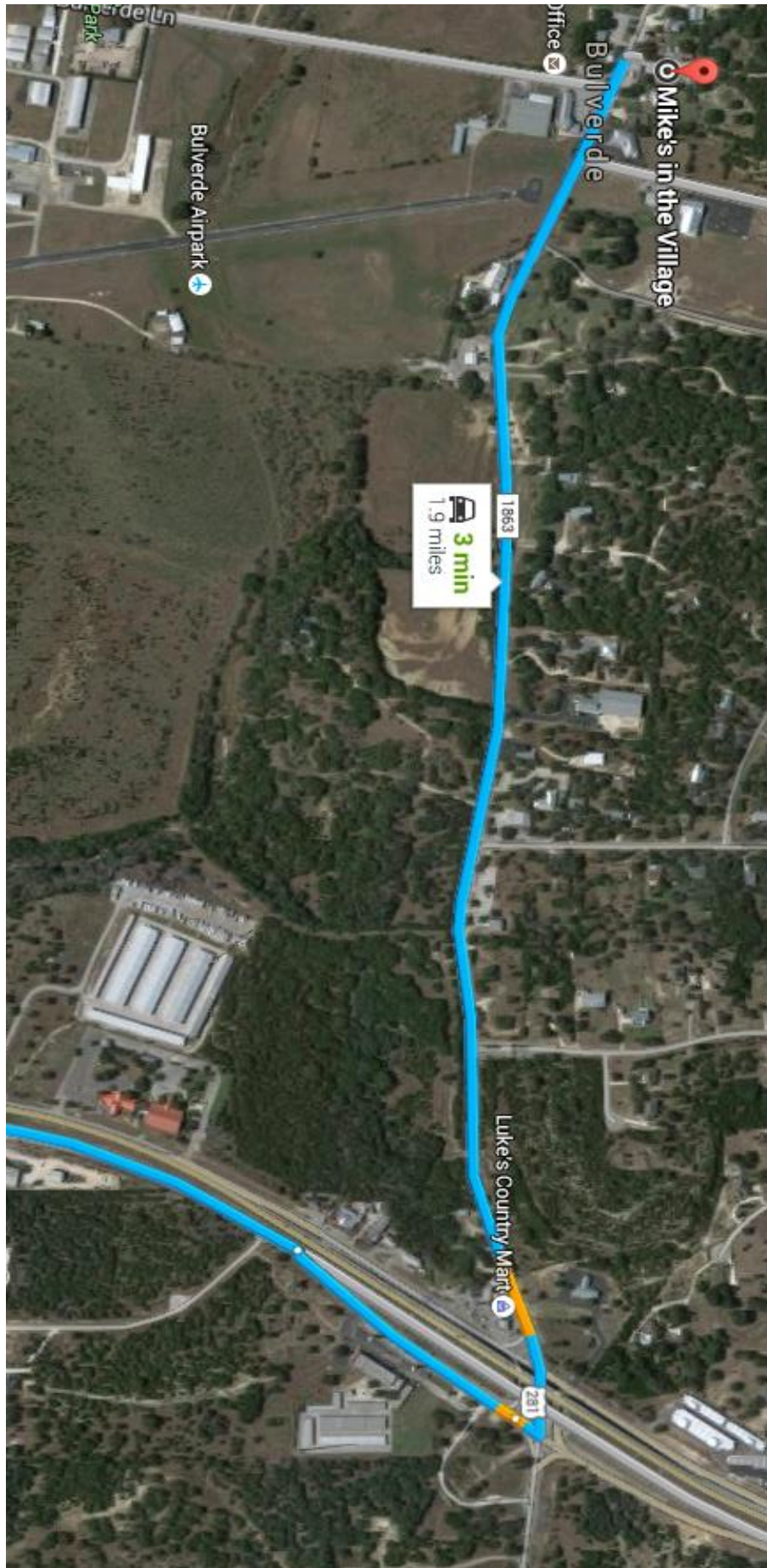
Destination will be on the right

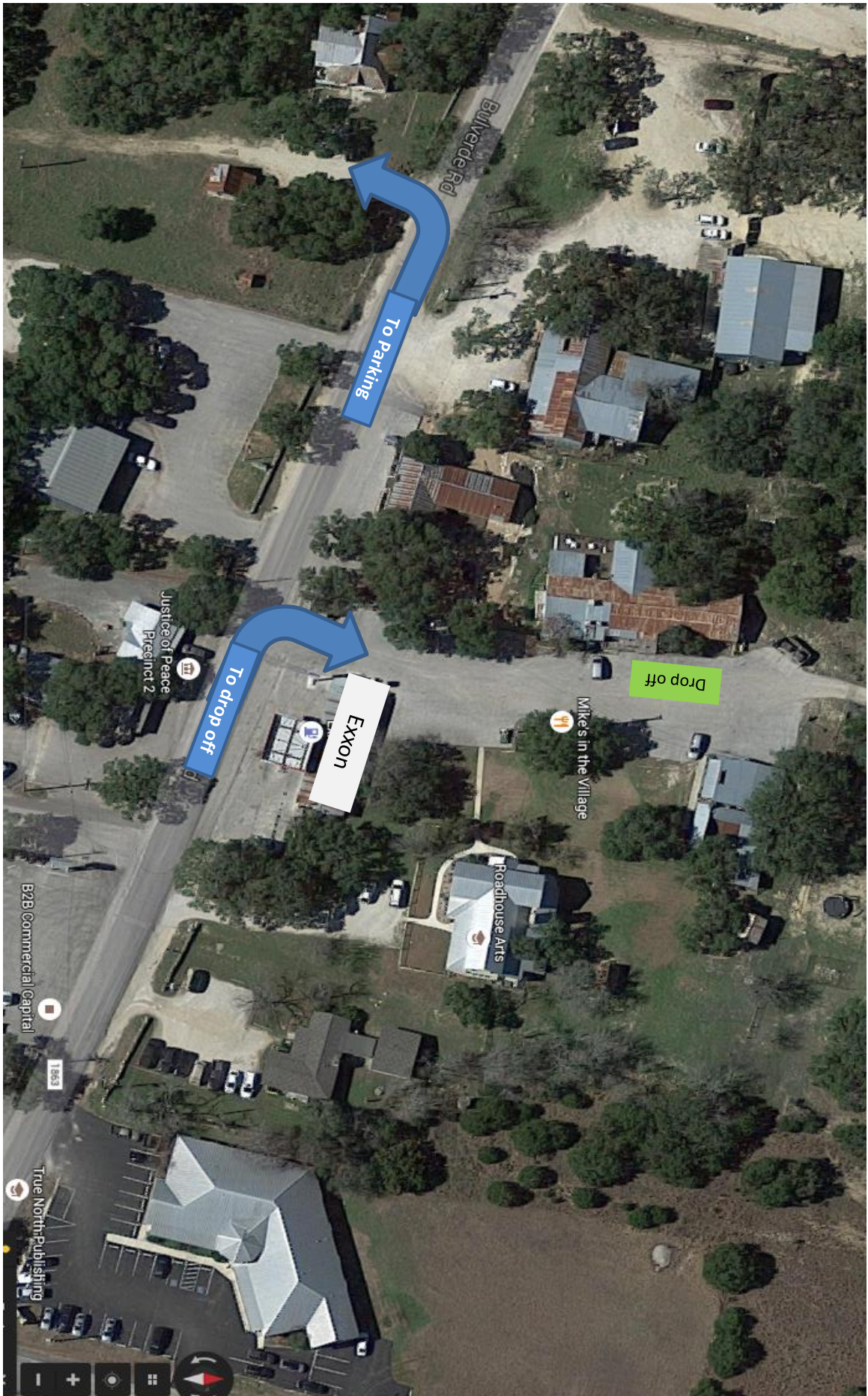
John Meyer



T **EXA** **S**
R **A** **I** **N**
G **A** **U** **G** **E**

WWW.BALCONESFORGE.ORG







HABA Forge Fest 2015

October 2-4, 2015

Featuring

Dereck Glaser

Pat Bossart Residence, 8283 CR 209, Plantersville TX 77363

Our featured educator / demonstrator, Dereck Glaser, will be instructing a class in Tool Making on Friday, 10/2. The class size will be limited to 10 – Register early before all the seats are taken. On Saturday and Sunday, 10/3-4, Dereck then will be demonstrating joinery, scrolls, riveting, botanicals, candlestick, and sculptural forging. The usual Forge Fest agenda will be followed, with good times and camaraderie in abundance throughout the program!



**Dereck Glaser:**

Dereck started forging in 1983 at the age of fourteen with a simple smithy of hand/foot-powered tools. Through his school years he pursued metalworking of all forms, developing his own studio and eagerly pursuing the life long task of accumulating the tooling and knowledge necessary to allow him to design and produce artistic metalwork. He earned a Bachelors of Science in Industrial Art Education with a minor in Art from Ohio University in 1992.

Dereck has taught at various craft schools across the country and is a licensed educator in most of New England. His metalwork is spread throughout the Eastern United States.

Dereck started a self directed Journeymanship in 1994, moving through various architectural blacksmith shops between Ohio and New Jersey as manager or head smith. In 1996, Dereck was awarded the People's Choice Award at the ABANA Conference in Alfred, NY and was featured in the Anvil's Ring magazine in 2003. His work reflects a traditional European flavor and emphasizes the methods and reasoning behind traditional joinery and the design aspects of many of the past and present masters that he has studied.

In 1997, Dereck moved his family to Maine to teach Metal arts on a high school level. He is now the Director of the New England School of Metalwork in Auburn Maine, which he helped start in 2000. Dereck has realigned his direction to do everything possible to promote the education of artistic and historic metalwork. He also continues to run his own studio, executing custom architectural metalwork and sculpture.

www.dereckglaser.com

www.newenglandschoolofmetalwork.com

Activities:

Besides the class and the demonstrations we will have the following activities:

- An auction to benefit HABA on Saturday. Items donated by sponsors and members will be auctioned off. Please prepare a contribution and be ready to bid!
- Dereck will be presenting a slide show of his work on Saturday evening.
- Free forging Friday and Saturday evenings. There will be 4 forges and anvils available for members to use. You may also bring your own equipment and setup.
- Ad hoc music by various participants in the evenings. You are encouraged to bring instruments and voices.

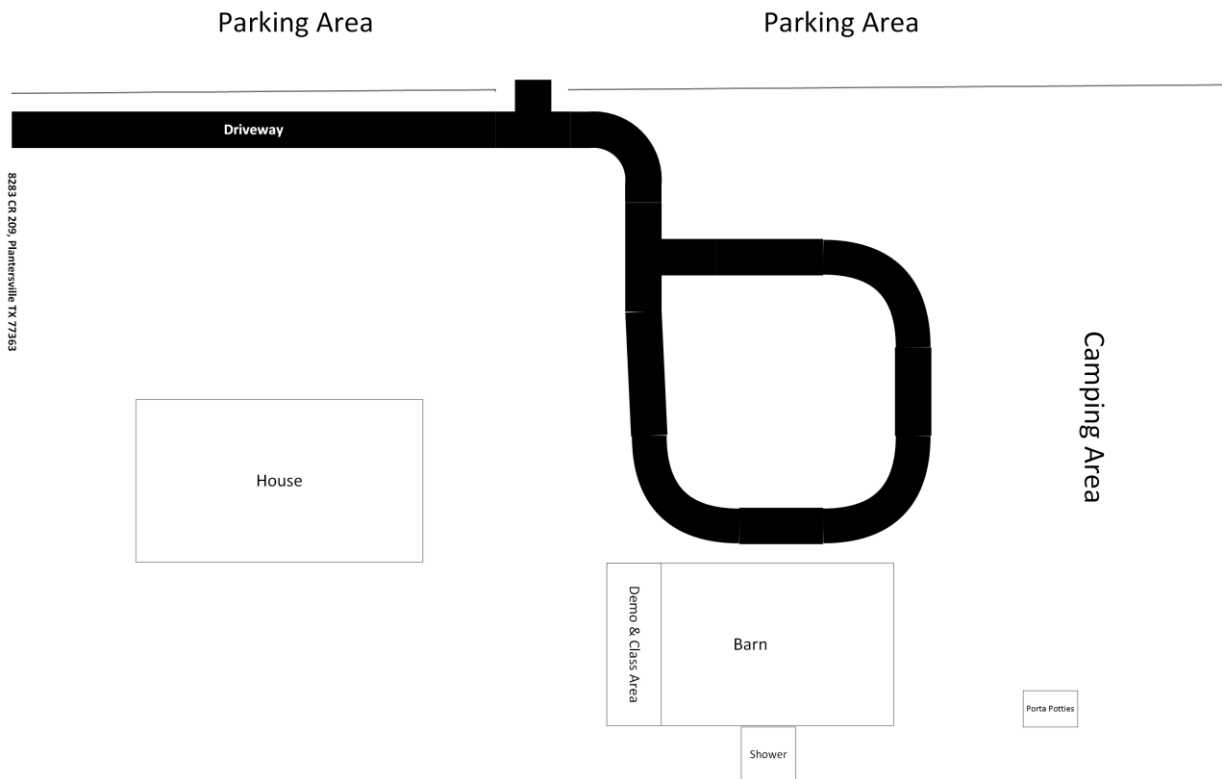
Food:

We will be providing lunch on Friday for paid participants of the Tool Making class. Dinner on Friday and Saturday night will be provided for a \$10 donation. All other meals are up to the attendees. There are a number of eating establishments within 15 miles in Navasota, Montgomery, Magnolia and points in between or you can bring your own.



Facilities:

There will be designated areas for parking and camping. We will have an outdoor shower, as well as porta potties. There will be limited electrical connections supplied by extension cords from the barn. There are several water spigots spread around the camping area. The demonstration area will have bleachers setup.



Schedule:

Thursday 10/1, 5:00 PM – Campers may start arriving to setup.

Friday 10/2

8:00 AM – Start of Tool Making Class (see separate flyer)

12:00 PM – Lunch break – sandwiches supplied for class participants

1:00 PM – Class continues

5:00 PM – Close of class, start setup for demonstrations

7:00 PM – Chili dinner - \$10.



Saturday 10/4

8:00 AM – Start of demonstration – joinery, scrolls, riveting

12:00 PM – Auction

1:00 PM – Lunchbreak

1:30 PM – Demonstrations continue – botanicals, candlestick

6:00 PM – Cajun culinary surprise - \$10

7:00 PM - Slide show of Dereck Glaser's work

Sunday 10/5

8:00 AM – Demonstrations continue – crane sculpture & base

12:00 PM – Close of Forge Fest

12:00 PM – 5:00 PM – Clean up and tear down

Directions:

Pat is located at 8283 COUNTY ROAD 209, Plantersville, TX 77363. If you look on Google Maps you will get an approximate location but since his place was built in the last couple of years it does not show it accurately. His drive way will be the first one on the left after the dogleg in the road. We will have signs at the entrance to Co. Road 209 and Pat's driveway.

From Houston: Take I45 north to Hwy 105 in Conroe and go west. At Hwy 1774 turn right. At Co Road 209 turn right. After the dogleg (sharp right turn and then a sharp left turn) Pat's driveway will be the first one on the left.

Alternative route: Take Beltway 8 to Hwy 249 and go north. At some point between Tomball and Magnolia it becomes Hwy 1774. This will take you past the Renaissance Festival site and eventually past Hwy 105. At Co Road 209 turn right. After the dogleg (sharp right turn and then a sharp left turn) Pat's driveway will be the first one on the left.

From Austin: Take 290 east and at Brenham pick up Hwy 105. At Hwy 1774 turn left. At Co Road 209 turn right. After the dogleg (sharp right turn and then a sharp left turn) Pat's driveway will be the first one on the left.

From Dallas: Take I45 south to Hwy 105 in Conroe and go west. At Hwy 1774 turn right. At Co Road 209 turn right. After the dogleg (sharp right turn and then a sharp left turn) Pat's driveway will be the first one on the left.

For more information email Pete Farrell at pmforging@gmail.com.



HABA Tool Making Class

Instructor: Dereck Glaser

Venue: HABA Forge Fest

Location: 8283 CR 209, Plantersville TX 77363

Schedule: 1 day, 10/2/2014, 8 AM to 5 PM

As part of the HABA Forge Fest this year we will have Dereck Glaser, our distinguished professional demonstrator, provide a training class focused on forging a variety of hand tools. This will be a hands-on teach-you-to-do-it class. Participants should have fairly proficient foundation skills of forging to obtain full benefit from this instruction. Forges, anvils, coal and materials will be supplied. You are encouraged to bring your own hammers and tongs, but the club will have some available as well. Students will take away the tools that they produce.

Dereck will teach the development of the following tools:

- Center punch
- Round punch
- Hot cut chisel
- Flat jaw tongs

There will be five forge stations setup to be shared by two people, giving us a total class of 10 people. Class will start at 8 AM on Friday 10/2. We will break for lunch at 12 and start again promptly at 1. Class will end at 5 PM. The class fee will include a lunch of sandwiches and bottled water.

Class Fee:

- \$100.00 per person paid on or before 9/19.
- \$125 after 9/19.
- Fee is non-refundable.

Payment can be made with cash, check or credit card. Contact Pete Farrell at pmforging@gmail.com or 512-750-3190 to arrange for payment.

About the Instructor:

Dereck started forging in 1983 at the age of fourteen with a simple smithy of hand/foot-powered tools. Through his school years he pursued metalworking of all forms, developing his own studio and eagerly pursuing the life long task of accumulating the tooling and knowledge necessary to allow him to design and produce artistic metalwork. He earned a Bachelors of Science in Industrial Art Education with a minor in Art from Ohio University in 1992.

Dereck has taught at various craft schools across the country and is a licensed educator in most of New England. His metalwork is spread throughout the Eastern United States.



Dereck started a self directed Journeymanship in 1994, moving through various architectural blacksmith shops between Ohio and New Jersey as manager or head smith. In 1996, Dereck was awarded the People's Choice Award at the ABANA Conference in Alfred, NY and was featured in the Anvil's Ring magazine in 2003. His work reflects a traditional European flavor and emphasizes the methods and reasoning behind traditional joinery and the design aspects of many of the past and present masters that he has studied.

In 1997, Dereck moved his family to Maine to teach Metal arts on a high school level. He is now the Director of the New England School of Metalwork in Auburn Maine, which he helped start in 2000. Dereck has realigned his direction to do everything possible to promote the education of artistic and historic metalwork. He also continues to run his own studio, executing custom architectural metalwork and sculpture.

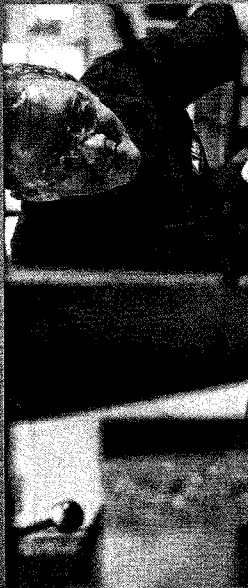
www.dereckglaser.com

www.newenglandschoolofmetalwork.com



- For more information email Pete Farrell at pmforging@gmail.com.

YOUR METAL.



YOUR SHAPE.

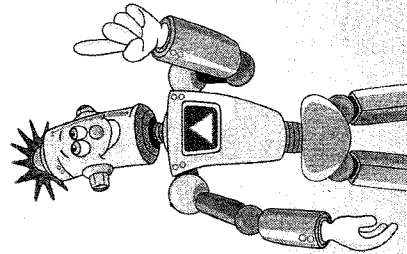


YOUR SIZE.



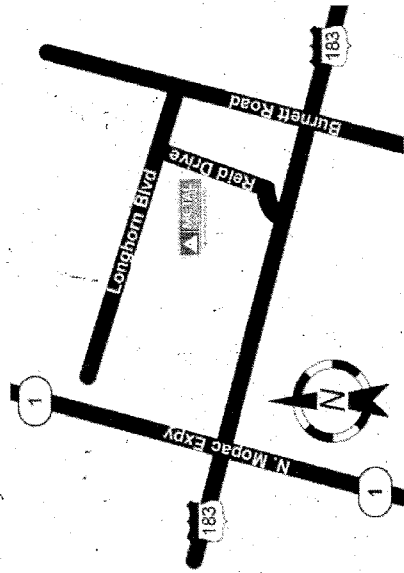
READY FAST.

**NEED METAL?
NO MINIMUM QUANTITY.
NO MINIMUM ORDER.
NO WAITING.
NO HASSLE.**



METAL SUPERMARKETS AUSTIN (NORTH)
9410 Reid Drive
Austin, TX 78758
512.833.9861

metalsupermarkets.com



©2014 Metal Supermarkets IP, Inc. All Rights Reserved.

**PUT THE
WORLD'S LARGEST
SUPPLIER OF SMALL
QUANTITY METALS
TO WORK FOR YOU.**



The Convenience Stores For Metal[®]

NOBODY CUTS IT LIKE WE DO.
metalsupermarkets.com

NOBODY CUTS IT LIKE WE DO. JUST ASK OUR 60,000 SATISFIED CUSTOMERS.

Nobody makes getting the exact metal you need easier or quicker than Metal Supermarkets! As the world's largest supplier of small quantity metals, we have over 8,000 grades and shapes in stock. We'll happily cut to size whatever metal you need, and complete your order fast! Plus, we can source hard-to-find metals for you, too!

Any Metal.

"We reduced our in-house metal inventory by shopping at Metal Supermarkets. They're our one stop shopping source for any metal we need."

Cut to Any Size.

"I needed one hundred pieces of aluminum cut in 2" pieces by the end of the day. Metal Supermarkets delivered the entire order, cut to size, by 3:00 p.m."

Ready Fast!

"When our assembly line went down, we needed a piece of cold rolled steel cut to size. Within minutes Metal Supermarkets delivered it to our door."

SERVICE WITHOUT THE RUN AROUND.

IT'S OUR POLICY...AND OUR PROMISE.

Our products may be metal, but our business is service. Since 1985, Metal Supermarkets has made fast, friendly service our priority. Now with a network of over 60 stores, we're the leader that over 60,000 satisfied customers turn to for all their metal needs.

- Maintenance and Repair Departments
- Manufacturers
- Machine Shops
- Tool and Die Makers
- Recreational Facilities
- Hospitals
- Schools and Universities
- Home Owners/Hobbyists
- Government

OVER 8,000 SHAPES, PROFILES & GRADES OF METAL IN STOCK, CUSTOM CUT WHILE YOU WAIT. NO MINIMUM QUANTITY.

Metal Supermarkets stocks metal so you don't have to. Get the exact metal that you need without wasting time running around.

Aluminum

Sheet: Flat, expanded, perforated plate and floor plate
Bar: Round, square, flat hexagon piping, tubing and structurals

Stainless

Sheet: Flat, expanded, perforated plate and floor plate
Bar: Round, square, flat hexagon piping, tubing and structurals

Hot Rolled Carbon Steel

Bars: Round, square, flat, hexagon, rebar
Structural: Angle, tees, beams, tubing, pipe
Sheet: Expanded and perforated plate

Cold Finished Steel Bars

Bar: Round, square, flat, hexagon
Turned ground and polished

Alloy Steel

Rounds, flats, squares, hexagons, plate
All common alloys available

Brass And Copper

Rounds, flats, squares, hexagon,
Sheet and plate

Tool Steel

01, W1, A-2, and D-2 drill rod
01, A-2, and D-2 flat ground gauge stock
All other common grades available

Bearing Bronze

Hollow bar
Round and flat bar
All common alloys available

Specialty Products

Spring steel, titanium and exotic alloys, shim stock, threaded rod and pipe fittings
Bar grating and safety grating

Value Added Services*

- Production saw cutting
 - Shearing and brake forming
 - Grinding — centerless & Blanchard
 - Plate cutting — profile cutting by gas, waterjet, plasma arch and laser cutting
 - Heat treating
 - Tube and pipe bending
 - Fabrication available upon request
 - Sourcing hard to find items
 - Fast delivery
- *Services Available At Selected Locations

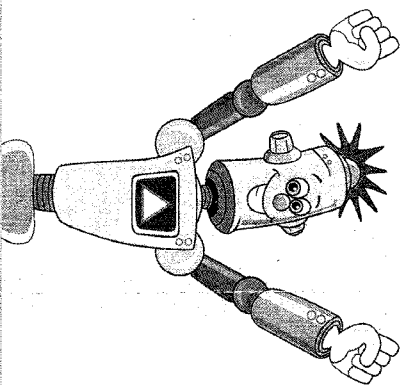
IT'S EASY TO GET THE METAL YOU NEED.

Stop in at one of our over 60 stores. We'll be happy to get your order ready fast. For locations go to metalsupermarkets.com.

Call 1-866-867-9344 24 hours a day, 7 days a week.

Go to metalsupermarkets.com to place your order online or find a specific Metal Supermarkets location.

Major Credit Cards Accepted.



The Convenience Stores For Metal®

metalsupermarkets.com

NOBODY CUTS IT LIKE WE DO.



Aspery, in Glen Rose, Texas

Oct. 11-13, 2015

Information and reservations:

Ron Stafford 209-610-3448

hotshuz002@Gmail.com

This will be the second year in a row we will have one of the most respected and capable blacksmith educators in North America, for a hands on clinic with you. Mark is editor of ABANA's **Hammer's Blow** magazine. Also he has authored three volumes of **Mastering the Fundamentals of Blacksmithing**. Mark was 2014 recipient of the prestigious BEALER award. It is our pleasure to have you with us for three days in October to experience even more growth in your smithing skills.



“Fussy Projects” - training for the developing smith. . .

This clinic will cover a number of techniques, many associated with aspects of ABANA's **National Grill**. As always Mark will start with calculations, techniques and a demonstration. After which you will reproduce the tool or forged item.

Prepare to Learn

Mark Aspery will conduct a full participation hands on clinic. Come prepared to work at the anvil and learn. You will bring your own set -up, anvil, fire, water bucket, basic hand tools, etc. Bring your shade "Easy Up", big hat, etc.

We will have some set ups available however they must be reserved early to guarantee availability.



Accommodations:

This clinic is being conducted on a pecan covered property in Somervell County near Glen Rose, Texas. Numerous motels are located just 5 miles away. Camping your thing? There is lots of room for you to park your camper or pitch your tent. Dry camping at no charge. Helps to keep your cost low. We try to accommodate your needs where possible, so if you have any questions please ask.

Cost and Information:

The fee for the three day clinic will be \$375. (*Discounts for early entry apply. Pay by August 11th \$330, a savings of 45.00. Pay by September 11th \$345, a savings of 30.00.*)

For reservations or information please contact Ron Stafford:

209 610 3448

hotshuzoo2@Gmail.com



ABANA

Name: _____

Address: _____

City: _____

State: _____ Zip/PC: _____

Country: _____

Type of Membership

- Regular\$55 Overseas\$65
- Student\$45 Contributing..... \$100
- Senior (65+)...\$50 Library \$45

\$5 discount for two year memberships and renewals

ABANA Chaper Affiliation: _____

Application may also be made at the ABANA web site:

www.abana.org

E-mail: _____

www url: _____

Phone: _____

Fax: _____

Credit Card Information

- Visa Mastercard

Expiration Date: _____

Card# _____

Submit check, money order (US banks only), or by credit card: _____

Artist-Blacksmith's Association of North America, Inc.
259 Muddy Fork Road
Jonesborough, Tennessee 37659

Phone: [423-913-1022](tel:423-913-1022), Fax: [423-913-1023](tel:423-913-1023)
centraloffice@abana.org

M E M B E R S H I P A P P L I C A T I O N

Vincent Herod
Spotted Dog Forge
166 Granite Road
Paige, TX 78659-4922